

○ MUSIC  city COUNSELOR

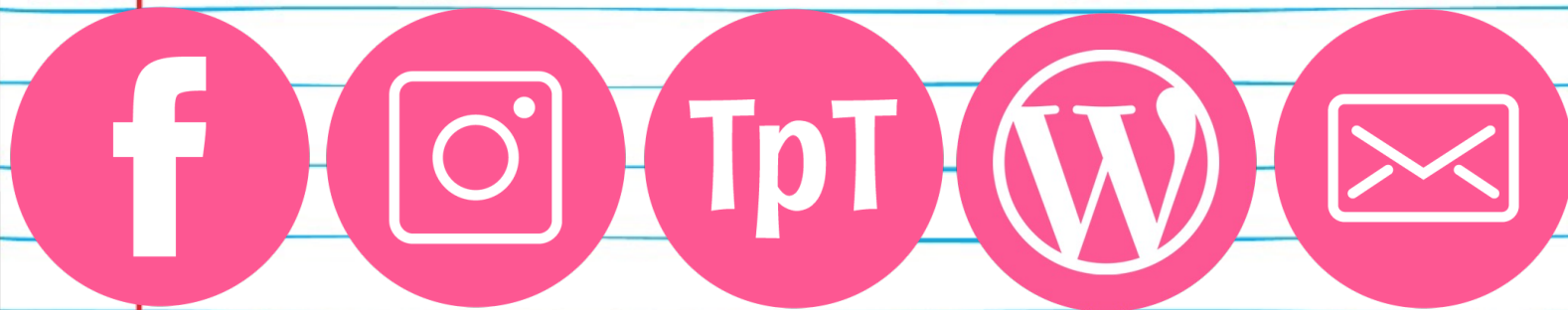
THANK YOU FOR YOUR
PURCHASE!



Hey y'all, Laura here! I so appreciate when you please take a moment to leave a review on my resources on my TpT Store. Thanks for your support! Enjoy the resource!

♥ *laura oathout*

LET'S CONNECT!



For helpful ideas, engaging resources, and freebies, please check out my website and membership!

○ ♥ **WEBSITE:** www.musiccitycounselor.com

♥ **MEMBERSHIP:** www.counselorcollab.com

ASCA MINDSETS & BEHAVIORS

Category 1: Mindset Standards

- M1: Belief in development of whole self, including a healthy balance of mental, social-emotional, and physical well-being.

Category 2: Behavior Standards

- B-SS 2: Positive, respectful, and supportive relationships with students who are similar to and different from them.
- B-SS 6: Effective collaboration and cooperation skills.
- B-SS 7: Leadership and teamwork skills to work effectively in diverse groups.

MATERIALS NEEDED:

- Printed materials
- Hook-and-loop fastener dots
- Crayons or markers
- Pencils
- Scissors
- Glue sticks

DIRECTIONS PAGE 1:

This lesson will take approximately 45 minutes to teach.

Suggested Sequence:

1. Review the PowerPoint or digital for Google Slides™ presentation. As you present each way to be a Sweet Friend, attach that piece of candy to the jar.
2. Review the content on the instructional posters with students.
3. Complete a worksheet or coloring page with students.

Sweet Friends Candy Jar Poster & 10 Candies Prep:

I included the Sweet Friends Candy Jar over 4 pages so that it would print poster-sized/large enough for students to see it from afar. Both full color and black/white versions are included – please print only the pages that you need.

Please print all 4 pages, cut out the pieces, and glue or tape them together so that it forms the jar. Please print each of the 10 Sweet Friend candies and cut them out. Please place one side of a hook-and-loop fastener dot on the back of each candy. Then, place the other side of the hook-and-loop fastener dot on the Sweet Friends Candy Jar wherever you'd like to place that candy. This will make attaching/adding them to the jar easy as you teach. Please use the sample on the next page as a guide for how they fit well, but you can arrange them however you'd like.

SAMPLE

The candies fit well in the jar like this,
but you can arrange them however
you'd like!



SAMPLE:



DIRECTIONS PAGE 2:

PowerPoint Presentation:

This presentation teaches students 10 ways to be a "Sweet Friend." A digital for Google Slides™ version is included in the zip folder, too. The presentation reviews 10 different candies that each teach one way to be a Sweet Friend. As you go through the presentation, grab the piece of Sweet Friends candy that matches the trait on the slide. Show it to students, then add it to the Sweet Friends Candy Jar Poster. You can also call on a student to place the piece of candy on the jar, if you'd like. By the end of the presentation, the Candy Jar should be "full." The last slide asks students to share how they can be a Sweet Friend. Please ask them to "turn and talk" with a neighbor and then share their responses with the group.

Instructional Posters:

4 posters are included. Please use these in instruction and to decorate your space.

Worksheets & Coloring Pages

Assorted worksheets and coloring pages are included. Please choose those that best fit the needs and abilities of your students, and the amount of time that you have.

Questions, comments, or suggestions? Please contact me any time at laura@musiccitycounselor.com. I'm here to help! 😊

PS I SO appreciate when you please take a moment to leave a review on my resources on TpT. It earns you credits towards future purchases, helps other educators find quality resources, and helps my small business grow.

SWEET FRIENDS

CANDY JAR +

10 CANDIES











:. Sweet

..

Friends

© Music City Counselor





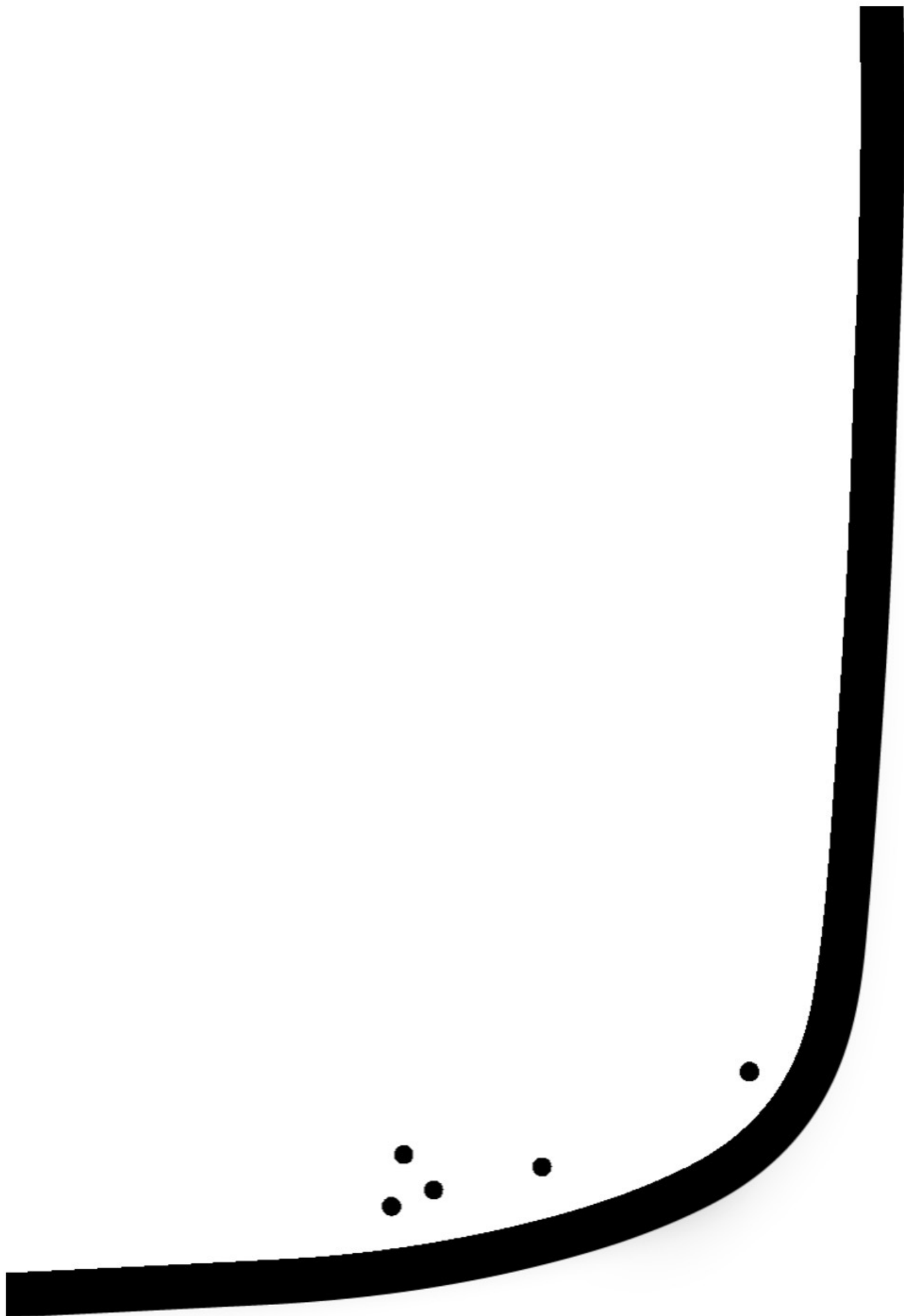


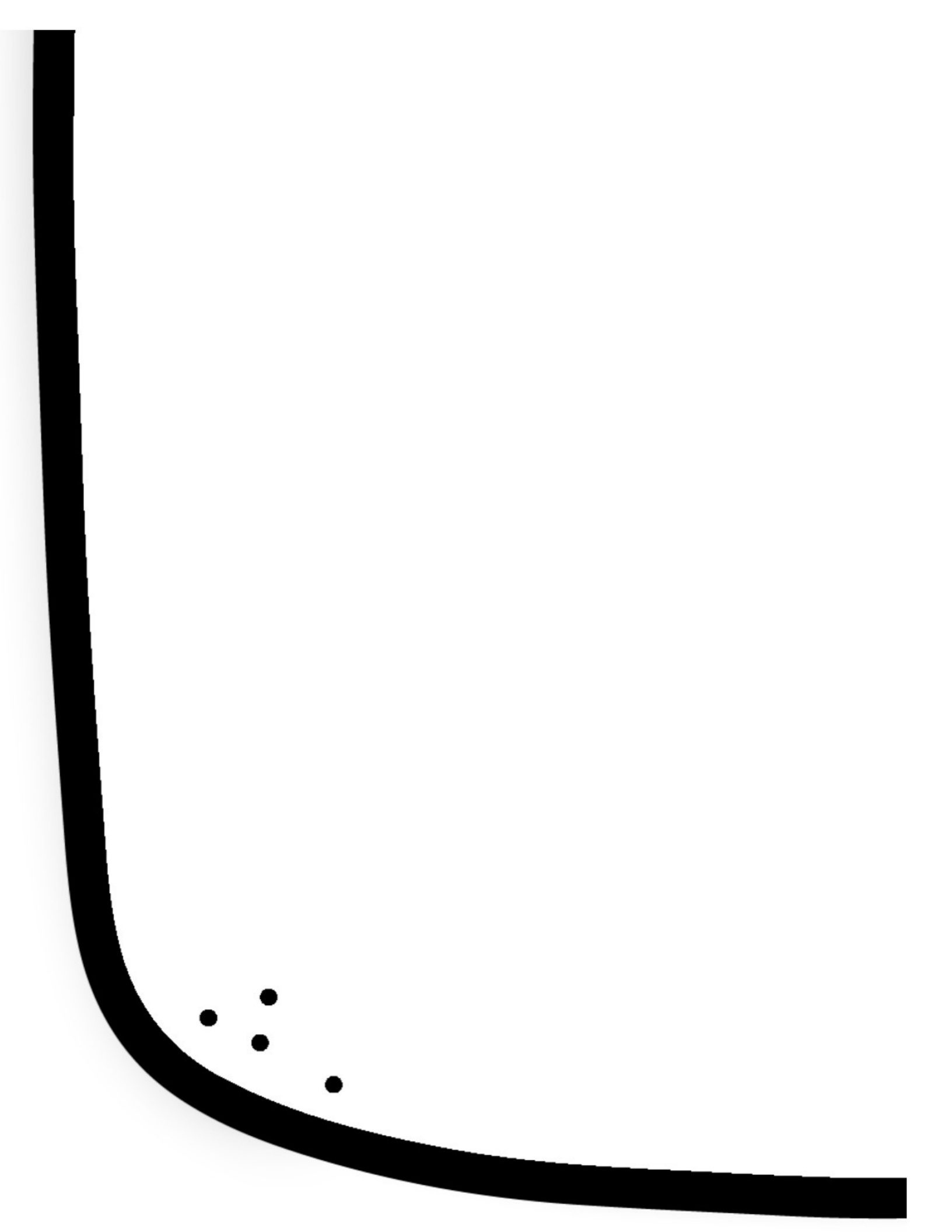
:.Sweet

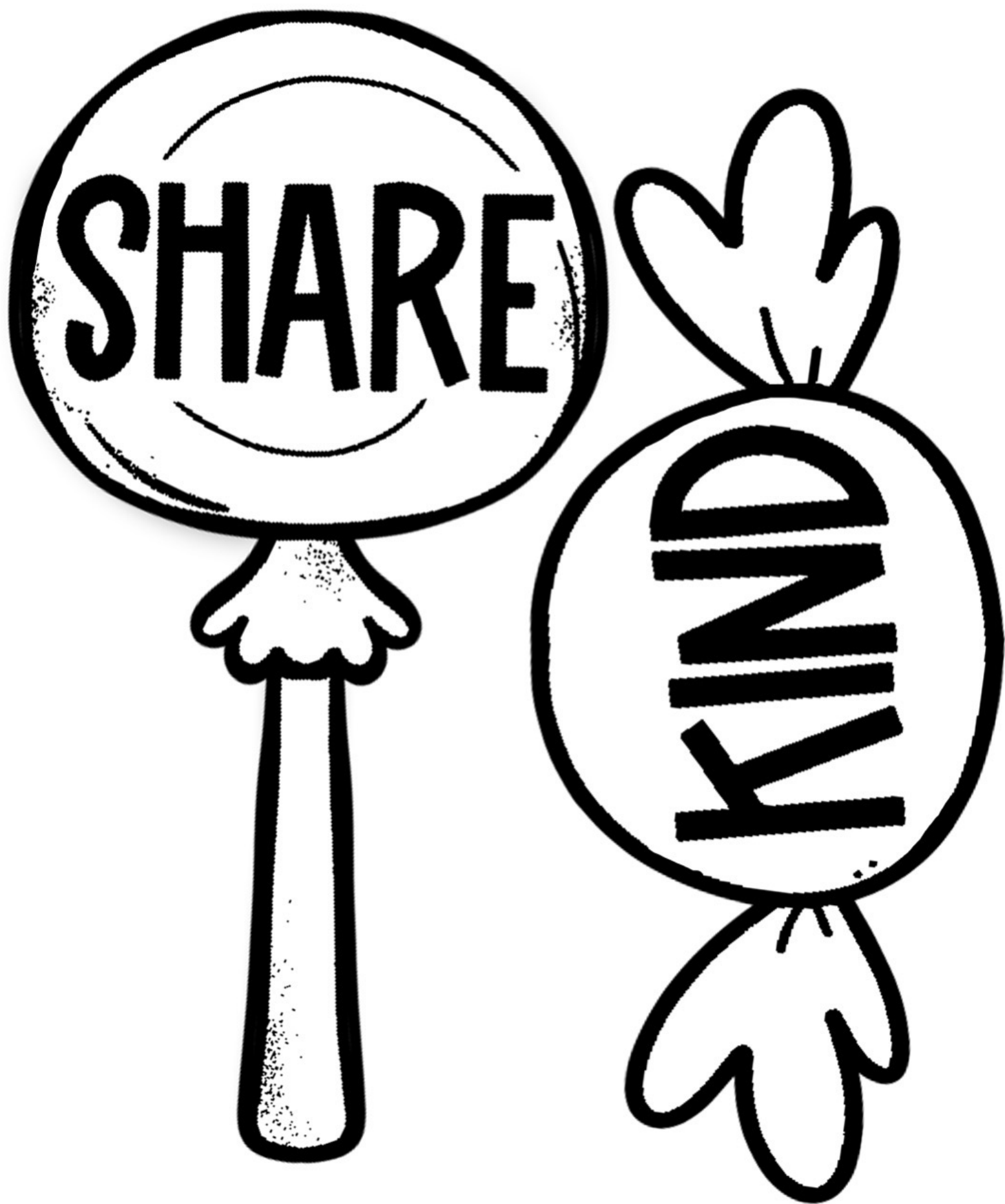
..

Friends

© Music City Counselor











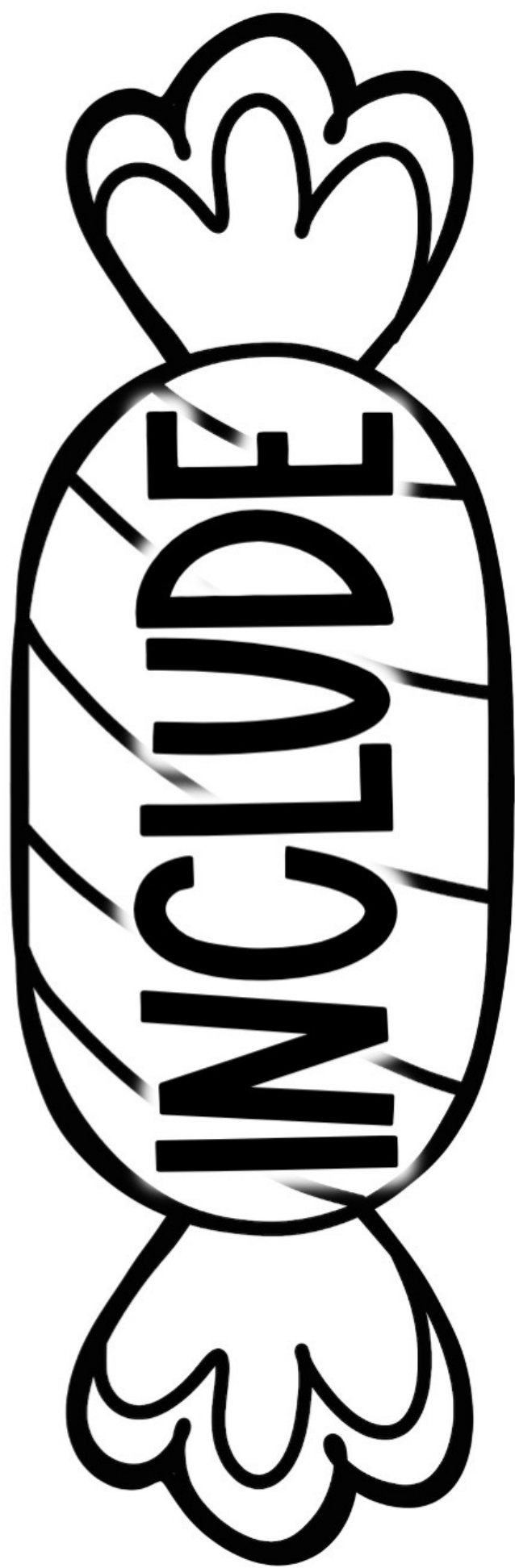
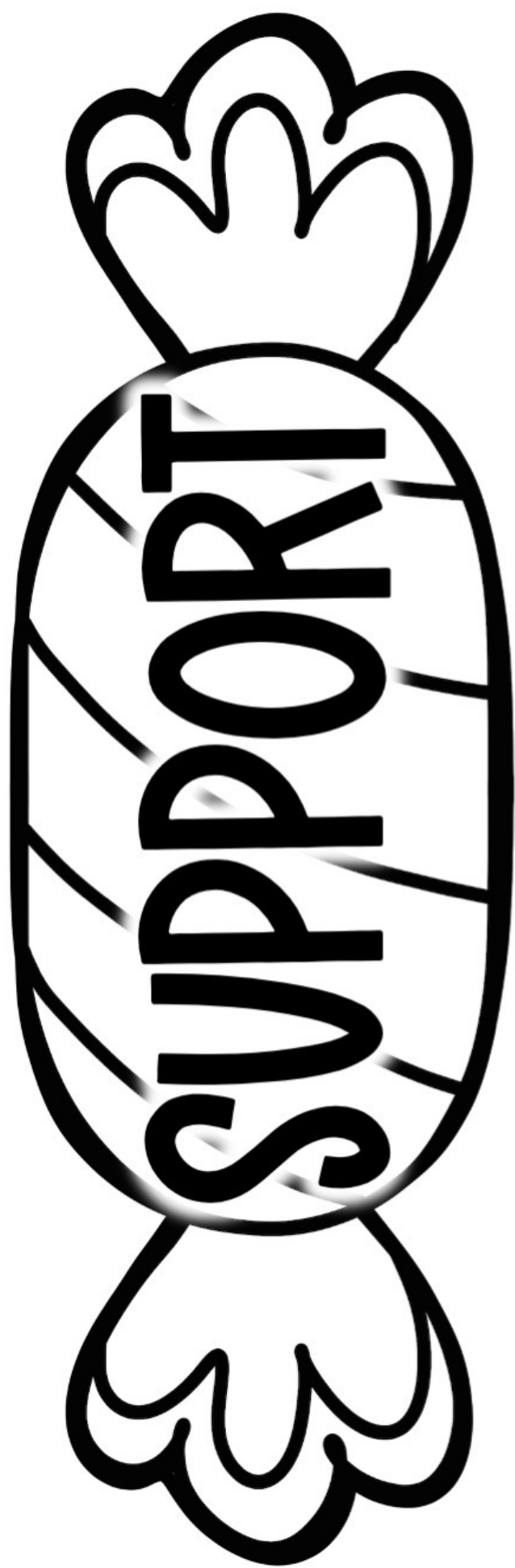
HELP



SORRY



LOYAL





POSTERS



© Music City Counselor

Sweet Friends



© Music City Counselor

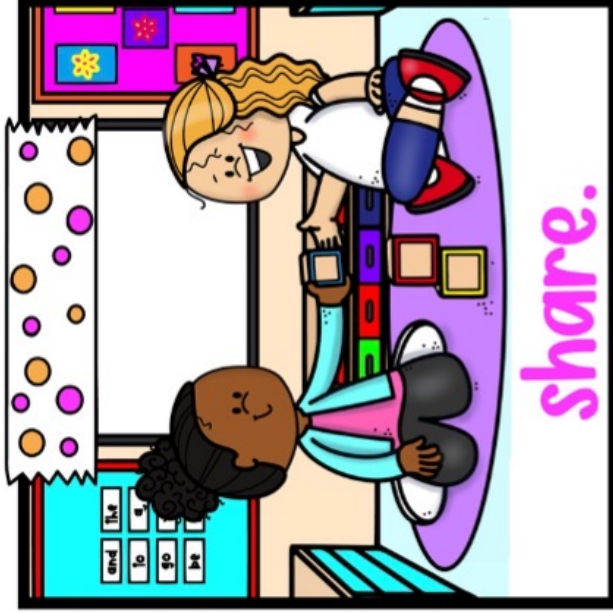
Sweet Friends



Sweet Friends



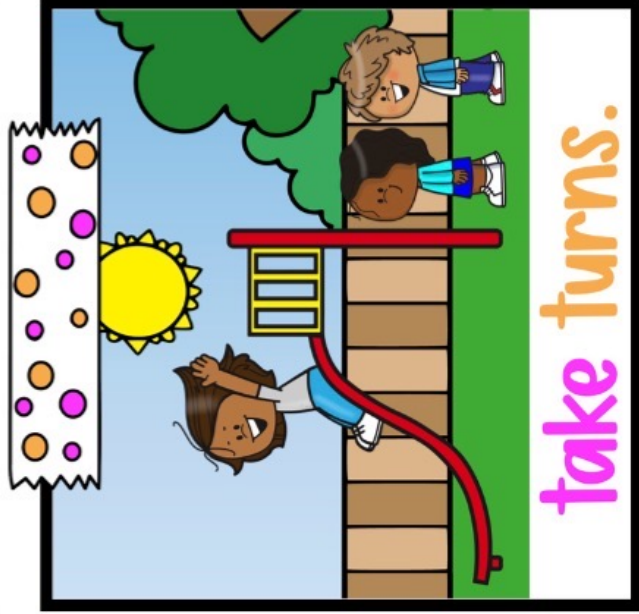
are kind.



share.



listen.



take turns.

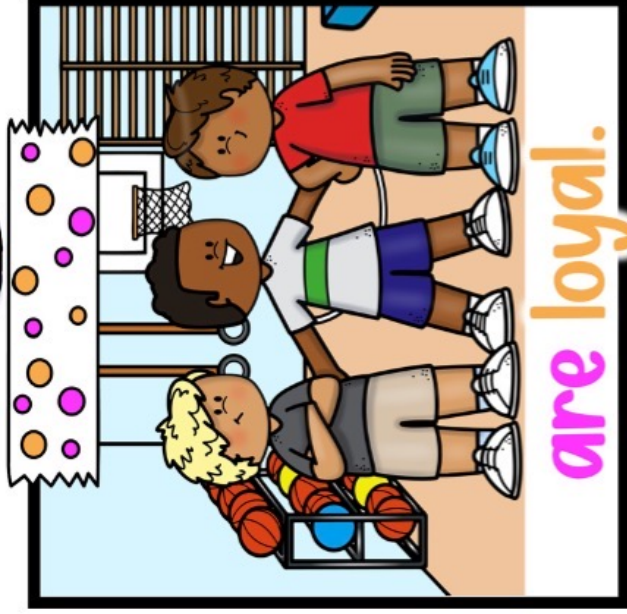
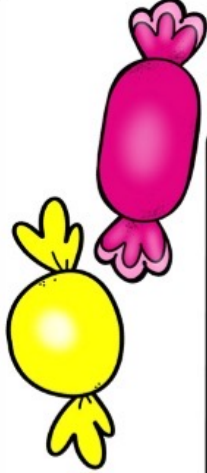


help.

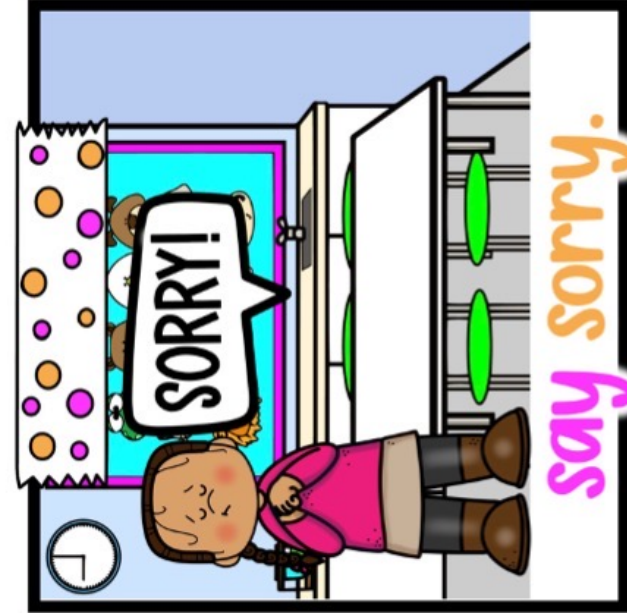




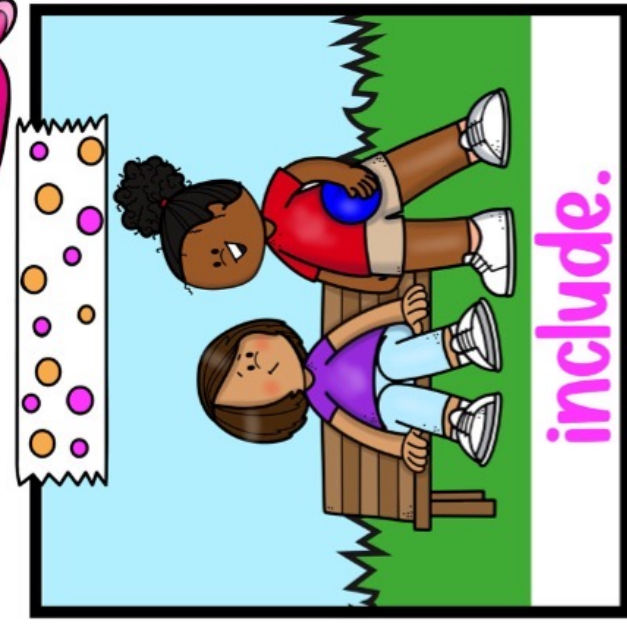
Sweet Friends



are loyal.



say sorry.



include.



support.



are honest.



Sweet Friends

WORKSHEETS + COLORING PAGES

Name: _____

Sweet Friends

Color the ways to be a Sweet Friend.

Sweet Friends



Name: _____

Sweet Friends

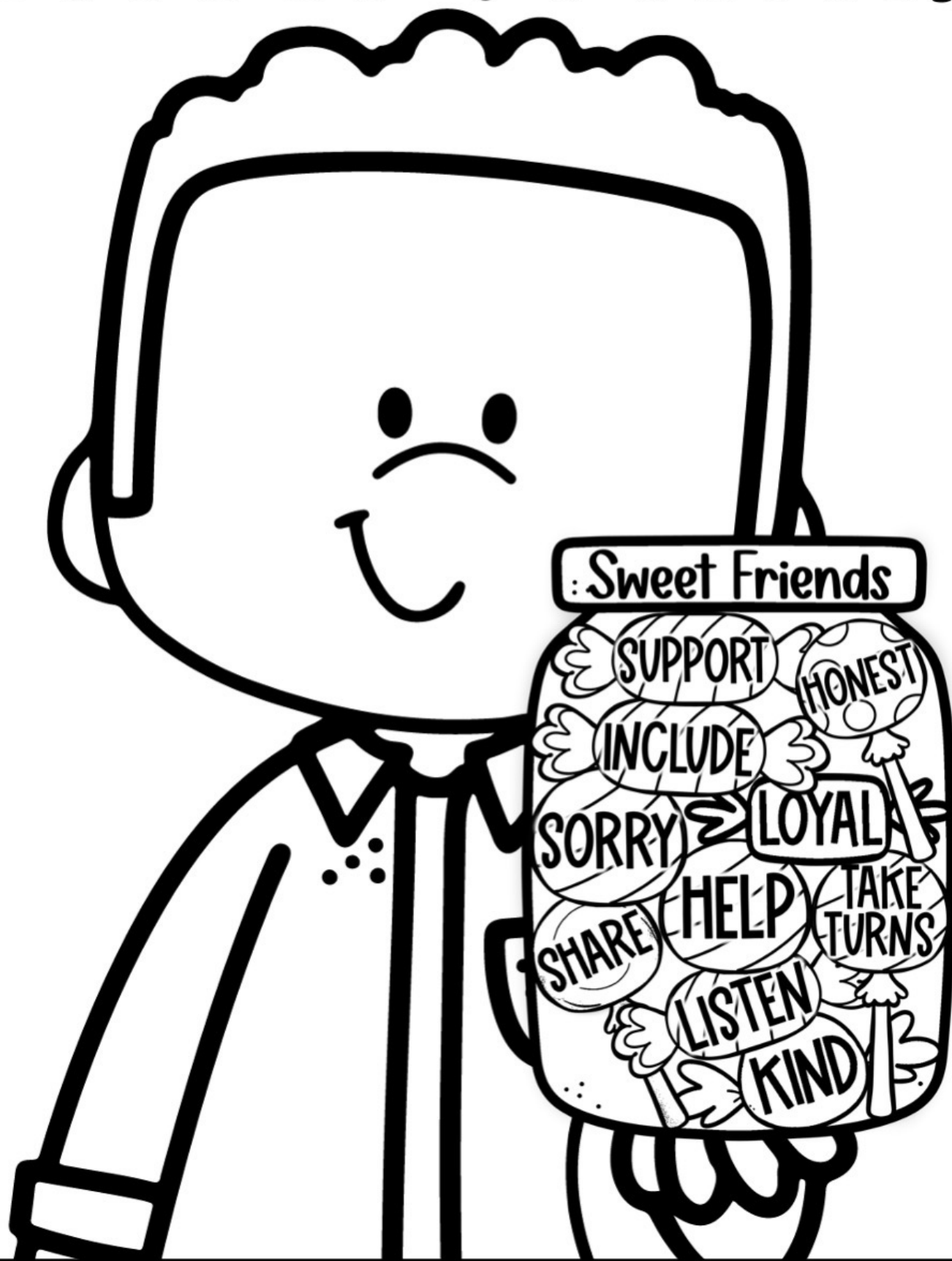
Write one way to be a Sweet Friend on each piece of candy. Then, color them.

Sweet Friends



Name: _____

Sweet Friends



Name: _____

Sweet Friends



Name: _____

Sweet Friends



Name: _____

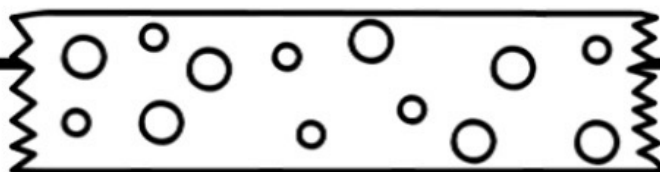
Sweet Friends



Name: _____

Sweet Friends

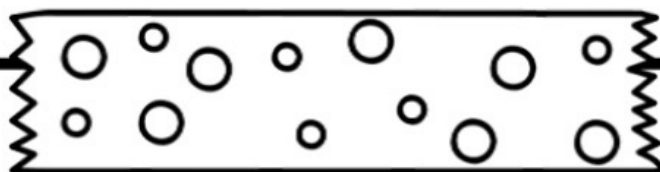
Write and draw about how you can be a
Sweet Friend.



Name: _____

Sweet Friends

Write and draw about how you can be a
Sweet Friend.



○ TERMS OF USE:

- Make copies for the purchaser's classroom AND share copies with other educators within your school building
- Reference (without distribution) this product in blog posts, seminars, professional development workshops, or other such venues provided there is both credit given to myself as the author and a link back to my TpT store included in the post/presentation

• YOU MAY •

- Claim the work as your own, alter the files in any way, or remove/attempt to remove the copyright
- Share this product with educators outside of your school building
- Repackage, sell, or giveaway this product to others
- Offer to share this product anywhere on the internet as a download or copy

• YOU MAY NOT •



Please contact me any time at laura@musiccitycounselor.com with questions, suggestions, resource requests, or comments. I'm here to help and would love to hear from you!

♥ *laura oathout*

THIS RESOURCE WAS MADE POSSIBLE THANKS TO:

